

# York Family Farms

5/1/2019

Corn - Acuron

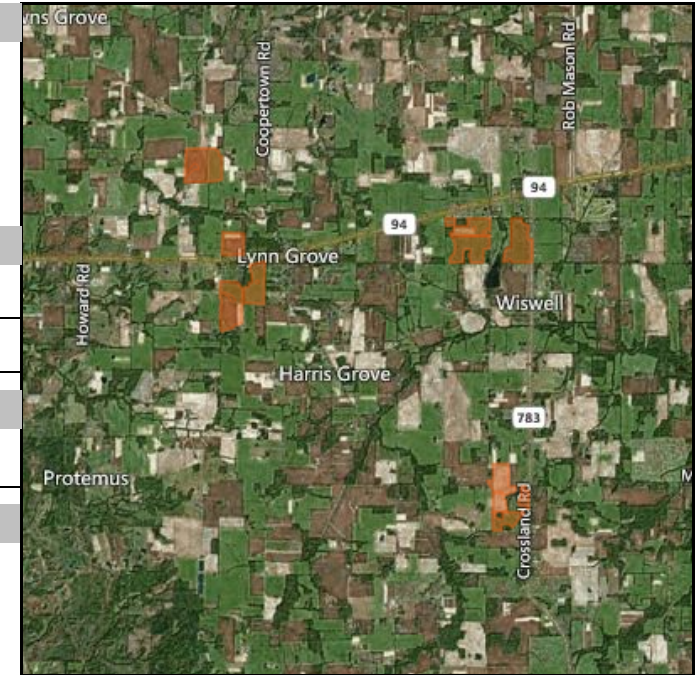
Work Order

2019

Authorized By Joe Ben Bogle

4/3/2019

Application Date And Time		Applicators	
Start Time		Name Company	License Number
Finish Time		Jeremy York	A140059 12/31/2019
Timing Event Pre-Plant			
Environmental			
Sky Condition		Wind Speed	Wind Direction
Soil Condition		Temperature	Humidity
Tank Information			
Size	1,000.00 gal	Carrier Area	15.00 gal
Total Carrier	8,652.58 gal	Tank Count	8.65
Notes			



Products									
Name	Active	Reg #	Pest	REI	PHI	App Method	App Area	Rate / ac.	Total
Acuron	Atrazine,Bicyclopyrone,s-Metolachlor,Mesotrione	100-1466	Palmer amaranth	24	60	Ground - Broadcast	576.84 ac.	2.50 qt	360.52 gal
Spraying				*	*		576.84 ac.	1.00 ac.	576.84 ac.

Fields	576.84 ac.
--------	------------

# York Family Farms

5/1/2019

**Corn - Acuron**

Work Order

2019

Authorized By Joe Ben Bogle

4/3/2019

Farm	Fields	Crop Zones	Crop	CENTER LAT/LONG	WO. Area	Actual Area
Darnell Farms	D01	Corn	Corn	36.58474, -88.44455	56.00	
Darnell Farms	D02	Corn	Corn	36.58146, -88.44965	80.00	
Darnell Farms	D06	Corn	Corn	36.60435, -88.45524	94.86	
Darnell Farms	D07	Corn	Corn	36.59149, -88.44922	39.62	
Merriam Farms	M13	Corn	Corn	36.55285, -88.39448	43.67	
Merriam Farms	M14	Corn	Corn	36.54733, -88.39409	48.95	
Merriam Farms	M15	Corn	Corn	36.54987, -88.38979	13.62	
York Farms	Y02	Corn	Corn	36.59422, -88.40071	55.00	
York Farms	Y03	Corn	Corn	36.59077, -88.40085	70.00	
York Farms	Y01	Corn	Corn	36.59155, -88.3908	75.12	

**Signature** \_\_\_\_\_

**Date** \_\_\_\_\_

**Worker Protection**

Acuron

<b>Signal Word</b>	CAUTION	<b>RUP</b>	True
<b>PPE</b>	<p>Some materials that are chemical-resistant to this product are listed below. Mixers, Loaders, Applicators and other handlers must wear: - Coveralls over short-sleeved shirt and short pants - Chemical-resistant gloves made of barrier laminate, butyl rubber &gt;= 14 mils, nitrile rubber &gt;= 14 mils, neoprene rubber &gt;= 14 mils, natural rubber &gt;= 14 mils, polyethylene, polyvinyl chloride (PVC) &gt;= 14 mils, or Viton(R) &gt;= 14 mils - Chemical-resistant footwear plus socks - Chemical-resistant apron when mixing/loading, cleaning up spills, or cleaning equipment, or otherwise exposed to the concentrate - Chemical-resistant headgear for overhead exposure See engineering controls for additional requirements. Follow manufacturer's instructions for cleaning/maintaining PPE. If no such instructions for washables exist, use detergent and hot water. Keep and wash PPE separately from other laundry. Discard clothing and other absorbent materials that have been drenched or heavily contaminated with this product's concentrate. Do not reuse them.</p>		
<b>ReEntry</b>	<p>For early entry to treated areas that is permitted under the Worker Protection Standard and that involves contact with anything that has been treated, such as plants, soil and water, wear: - Coveralls over short-sleeved shirt and short pants - Chemical-resistant gloves Category A (e.g. barrier laminate, butyl rubber, nitrile rubber, neoprene rubber, natural rubber, polyethylene, polyvinyl chloride (PVC) or Viton) - Chemical resistant footwear plus socks - Chemical-resistant headgear for overhead exposure.</p>		

