

# York Family Farms

Work Order

5/1/2019

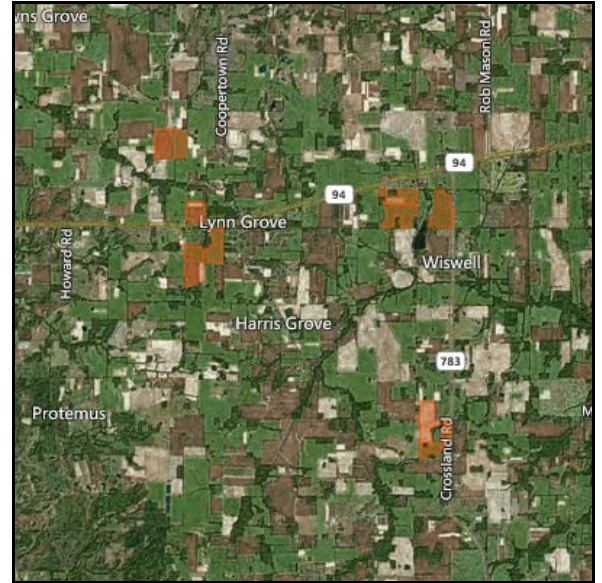
2019

Corn - Acuron

Joe Ben Bogle

4/3/2019

<b>Application Date And Time</b>
<b>Start Time</b>
<b>Finish Time</b>
<b>App Method</b>
<b>Additional Pests</b>
<b>Applicators</b>
<b>Environmental</b>
<b>Sky Condition</b>
<b>Soil Condition</b>



Wind Speed \_\_\_\_\_ Wind Direction \_\_\_\_\_ Temperature \_\_\_\_\_ Humidity \_\_\_\_\_

Tank Size \_\_\_\_\_ Carrier Area \_\_\_\_\_ Total Carrier \_\_\_\_\_ Tank Count 0.00

Products			
Name	Reg Number	Rate/Area	Total
Acuron	100-1466	2.50 qt	360.52 gal
Spraying		1.00 ac.	576.84 ac.

Fields						576.84 ac.	
Farm	Field	Crop Zone	Crop	CENTER	WO. Area	Actual Area	
Darnell Farms	D01	Corn	Corn	36.58474, -	56.00		
<b>Name / Active</b>		<b>EPA Number / Pest</b>		<b>REI(h)</b>	<b>PHI(d)</b>	<b>Rate/Area</b>	<b>Total</b>
Acuron		100-1466		24	60	2.50 qt	35.00 gal
Atrazine, Bicyclopyrone, s-		Palmer amaranth		*	*		
<b>Spraying</b>						1.00 ac.	56.00 ac.
Darnell Farms	D02	Corn	Corn	36.58146, -	80.00		
<b>Name / Active</b>		<b>EPA Number / Pest</b>		<b>REI(h)</b>	<b>PHI(d)</b>	<b>Rate/Area</b>	<b>Total</b>
Acuron		100-1466		24	60	2.50 qt	50.00 gal
Atrazine, Bicyclopyrone, s-		Palmer amaranth		*	*		
<b>Spraying</b>						1.00 ac.	80.00 ac.
Darnell Farms	D06	Corn	Corn	36.60435, -	94.86		
<b>Name / Active</b>		<b>EPA Number / Pest</b>		<b>REI(h)</b>	<b>PHI(d)</b>	<b>Rate/Area</b>	<b>Total</b>
Acuron		100-1466		24	60	2.50 qt	59.28 gal
Atrazine, Bicyclopyrone, s-		Palmer amaranth		*	*		
<b>Spraying</b>						1.00 ac.	94.86 ac.
Darnell Farms	D07	Corn	Corn	36.59149, -	39.62		

# York Family Farms

5/1/2019

Corn - Acuron

Work Order

2019

Joe Ben Bogle

4/3/2019

<u>Name / Active</u>		<u>EPA Number / Pest</u>	<u>REI(h)</u>	<u>PHI(d)</u>	<u>Rate/Area</u>	<u>Total</u>
<b>Acuron</b> <i>Atrazine,Bicyclopyrone,s-</i>		100-1466 <i>Palmer amaranth</i>	24	60	2.50 qt	24.76 gal
<b>Spraying</b>			*	*	1.00 ac.	39.62 ac.
Merriam Farms	M13	Corn	Corn	36.55285, -	43.67	
<u>Name / Active</u>		<u>EPA Number / Pest</u>	<u>REI(h)</u>	<u>PHI(d)</u>	<u>Rate/Area</u>	<u>Total</u>
<b>Acuron</b> <i>Atrazine,Bicyclopyrone,s-</i>		100-1466 <i>Palmer amaranth</i>	24	60	2.50 qt	27.29 gal
<b>Spraying</b>			*	*	1.00 ac.	43.67 ac.
Merriam Farms	M14	Corn	Corn	36.54733, -	48.95	
<u>Name / Active</u>		<u>EPA Number / Pest</u>	<u>REI(h)</u>	<u>PHI(d)</u>	<u>Rate/Area</u>	<u>Total</u>
<b>Acuron</b> <i>Atrazine,Bicyclopyrone,s-</i>		100-1466 <i>Palmer amaranth</i>	24	60	2.50 qt	30.59 gal
<b>Spraying</b>			*	*	1.00 ac.	48.95 ac.
Merriam Farms	M15	Corn	Corn	36.54987, -	13.62	
<u>Name / Active</u>		<u>EPA Number / Pest</u>	<u>REI(h)</u>	<u>PHI(d)</u>	<u>Rate/Area</u>	<u>Total</u>
<b>Acuron</b> <i>Atrazine,Bicyclopyrone,s-</i>		100-1466 <i>Palmer amaranth</i>	24	60	2.50 qt	8.52 gal
<b>Spraying</b>			*	*	1.00 ac.	13.62 ac.
York Farms	Y02	Corn	Corn	36.59422, -	55.00	
<u>Name / Active</u>		<u>EPA Number / Pest</u>	<u>REI(h)</u>	<u>PHI(d)</u>	<u>Rate/Area</u>	<u>Total</u>
<b>Acuron</b> <i>Atrazine,Bicyclopyrone,s-</i>		100-1466 <i>Palmer amaranth</i>	24	60	2.50 qt	34.38 gal
<b>Spraying</b>			*	*	1.00 ac.	55.00 ac.
York Farms	Y03	Corn	Corn	36.59077, -	70.00	
<u>Name / Active</u>		<u>EPA Number / Pest</u>	<u>REI(h)</u>	<u>PHI(d)</u>	<u>Rate/Area</u>	<u>Total</u>
<b>Acuron</b> <i>Atrazine,Bicyclopyrone,s-</i>		100-1466 <i>Palmer amaranth</i>	24	60	2.50 qt	43.75 gal
<b>Spraying</b>			*	*	1.00 ac.	70.00 ac.
York Farms	Y01	Corn	Corn	36.59155, -	75.12	
<u>Name / Active</u>		<u>EPA Number / Pest</u>	<u>REI(h)</u>	<u>PHI(d)</u>	<u>Rate/Area</u>	<u>Total</u>
<b>Acuron</b> <i>Atrazine,Bicyclopyrone,s-</i>		100-1466 <i>Palmer amaranth</i>	24	60	2.50 qt	46.95 gal
<b>Spraying</b>			*	*	1.00 ac.	75.12 ac.

Notes

5/1/2019

2019

**Corn - Acuron**

Joe Ben Bogle

4/3/2019

**Signature**

**Date**

## Worker Protection

### Acuron

**Signal Word**

CAUTION

RUP

True

**PPE**

Some materials that are chemical-resistant to this product are listed below. Mixers, Loaders, Applicators and other handlers must wear: - Coveralls over short-sleeved shirt and short pants - Chemical-resistant gloves made of barrier laminate, butyl rubber >= 14 mils, nitrile rubber >= 14 mils, neoprene rubber >= 14 mils, natural rubber >= 14 mils, polyethylene, polyvinyl chloride (PVC) >= 14 mils, or Viton(R) >= 14 mils - Chemical-resistant footwear plus socks - Chemical-resistant apron when mixing/loading, cleaning up spills, or cleaning equipment, or otherwise exposed to the concentrate - Chemical-resistant headgear for overhead exposure See engineering controls for additional requirements. Follow manufacturer's instructions for cleaning/maintaining PPE. If no such instructions for washables exist, use detergent and hot water. Keep and wash PPE separately from other laundry. Discard clothing and other absorbent materials that have been drenched or heavily contaminated with this product's concentrate. Do not reuse them.

**ReEntry**

For early entry to treated areas that is permitted under the Worker Protection Standard and that involves contact with anything that has been treated, such as plants, soil and water, wear: - Coveralls over short-sleeved shirt and short pants - Chemical-resistant gloves Category A (e.g. barrier laminate, butyl rubber, nitrile rubber, neoprene rubber, natural rubber, polyethylene, polyvinyl chloride (PVC) or Viton) - Chemical resistant footwear plus socks - Chemical-resistant headgear for overhead exposure.