

York Family Farms

5/1/2019

Corn - Acuron

Work Order

2019

Authorized By Joe Ben Bogle

Application Date & Time

Start Time

Finish Time:

Timing Event: Pre-Plant

App Method:

Additional Pest(s):

Applicators

Name/Company

License No.

Jeremy York

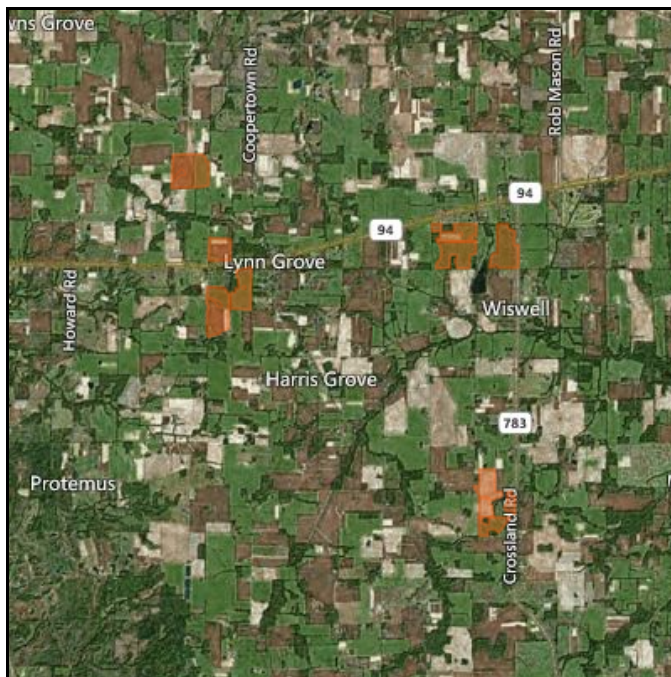
A140059

12/31/2019

Environmental

Sky Condition:

Soil Condition:



Wind Speed: _____ Wind Direction: _____ Temperature: _____ Humidity: _____

Tank Size: 1,000.00 gal Carrier/Area: 15.00 gal Total Carrier: 8,652.58 gal Tank Count: 8.65

Products

Name / Active	Reg # / Pest	REI / PHI	Area / App Method	Rate / Area	Total
Acuron	100-1466	REI(h) 24	576.84 ac.	2.50 qt	360.52 gal
Atrazine, Bicyclopyrone, s-Metolachlor, Mesotrione	Palmer amaranth	PHI(d) 60	Ground - Broadcast		
Spraying		REI(h) *	576.84 ac.	1.00 ac.	576.84 ac.
		PHI(d) *			

Fields

576.84 ac.

York Family Farms

5/1/2019

Corn - Acuron

Work Order

2019

Authorized By Joe Ben Bogle

Farm	Field	Crop Zone	Crop	Center Lat/Long	WO. Area	Actual Area
Darnell Farms	D01	Corn	Corn	36.58474, -88.44455	56.00	
Darnell Farms	D02	Corn	Corn	36.58146, -88.44965	80.00	
Darnell Farms	D06	Corn	Corn	36.60435, -88.45524	94.86	
Darnell Farms	D07	Corn	Corn	36.59149, -88.44922	39.62	
Merriam Farms	M13	Corn	Corn	36.55285, -88.39448	43.67	
Merriam Farms	M14	Corn	Corn	36.54733, -88.39409	48.95	
Merriam Farms	M15	Corn	Corn	36.54987, -88.38979	13.62	
York Farms	Y02	Corn	Corn	36.59422, -88.40071	55.00	
York Farms	Y03	Corn	Corn	36.59077, -88.40085	70.00	
York Farms	Y01	Corn	Corn	36,59155, -88,3908	75.12	

Notes

Signature

Date

Worker Protection

Acuron

Signal Word

CAUTION

RUP

True

PPE

Some materials that are chemical-resistant to this product are listed below. Mixers, Loaders, Applicators and other handlers must wear: - Coveralls over short-sleeved shirt and short pants - Chemical-resistant gloves made of barrier laminate, butyl rubber >= 14 mils, nitrile rubber >= 14 mils, neoprene rubber >= 14 mils, natural rubber >= 14 mils, polyethylene, polyvinyl chloride (PVC) >= 14 mils, or Viton(R) >= 14 mils - Chemical-resistant footwear plus socks - Chemical-resistant apron when mixing/loading, cleaning up spills, or cleaning equipment, or otherwise exposed to the concentrate - Chemical-resistant headgear for overhead exposure See engineering controls for additional requirements. Follow manufacturer's instructions for cleaning/maintaining PPE. If no such instructions for washables exist, use detergent and hot water. Keep and wash PPE separately from other laundry. Discard clothing and other absorbent materials that have been drenched or heavily contaminated with this product's concentrate. Do not reuse them.

ReEntry

For early entry to treated areas that is permitted under the Worker Protection Standard and that involves contact with anything that has been treated, such as plants, soil and water, wear: - Coveralls over short-sleeved shirt and short pants - Chemical-resistant gloves Category A (e.g. barrier laminate, butyl rubber, nitrile rubber, neoprene rubber, natural rubber, polyethylene, polyvinyl chloride (PVC) or Viton) - Chemical resistant footwear plus socks - Chemical-resistant headgear for overhead exposure.