

York Family Farms

Corn - Acuron
5/1/2019

Application

2019

Joe Ben Bogle

4/3/2019

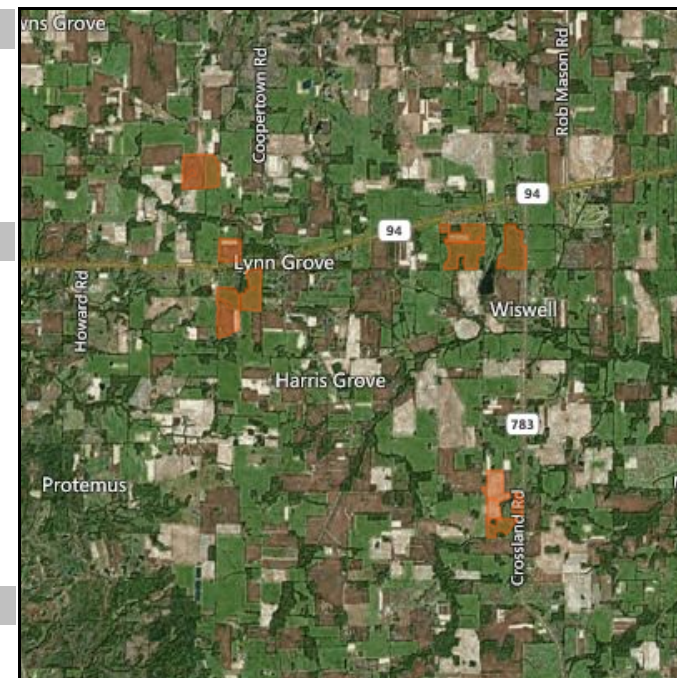
Application Date & Time		Applicators	
Start Time:	5/1/2019 8:00:00 AM	Name/Company	License No.
Finish Time:	5/1/2019 10:30:00 AM	Jeremy York	A140059 12/31/2019
Timing Event:	Pre-Plant		

Environmental			
Starting Conditions			
Sky Condition:	Mostly Cloudy	Wind Speed:	10.0
Soil Condition:	Unknown	Temperature:	67.0
Wind Direction:	Southwest	Humidity:	82.0
Ending Conditions			
Sky Condition:	Mostly Sunny	Wind Speed:	8.0
Soil Condition:	Unknown	Temperature:	72.0
Wind Direction:	South-Southwest	Humidity:	75.0

Tank Information			
Size:	Carrier/Area:	Total Carrier:	Tank Count: 0.00

Notes

Source :: WorkOrder #Corn - Acuron



Products

York Family Farms

Corn - Acuron

5/1/2019

Application

2019

Joe Ben Bogle

4/3/2019

Name	Active	Reg #	Pest	REI	PHI	App Method	App Area	Rate / ac.	Total
Acuron	Atrazine,Bicyclopyrone,s-Metolachlor,Mesotrione	100-1466	Palmer amaranth	24	60	Ground - Broadcast	576.84 ac.	2.50 qt	360.52 gal
Spraying				*	*	Ground - Broadcast	576.84 ac.	1.00 ac.	576.84 ac.

Fields						576.84 ac.
Farm	Field	Crop Zone	Crop	Center Lat/Long	App Area	
Darnell Farms	D01	Corn	Corn	36.58474, -88.44455	56.00	
Darnell Farms	D02	Corn	Corn	36.58146, -88.44965	80.00	
Darnell Farms	D06	Corn	Corn	36.60435, -88.45524	94.86	
Darnell Farms	D07	Corn	Corn	36.59149, -88.44922	39.62	
Merriam Farms	M13	Corn	Corn	36.55285, -88.39448	43.67	
Merriam Farms	M14	Corn	Corn	36.54733, -88.39409	48.95	
Merriam Farms	M15	Corn	Corn	36.54987, -88.38979	13.62	
York Farms	Y01	Corn	Corn	36.59155, -88.3908	75.12	
York Farms	Y02	Corn	Corn	36.59422, -88.40071	55.00	
York Farms	Y03	Corn	Corn	36.59077, -88.40085	70.00	

Signature _____

Date _____