

# York Family Farms

**Corn - Acuron**

5/1/2019

Application

2019

Joe Ben Bogle

4/3/2019

## Application Date & Time

**Start Time:** 5/1/2019 8:00:00 AM  
**Finish Time:** 5/1/2019 10:30:00 AM  
**Timing Event:** Pre-Plant

## Applicators

**Name/Company:** Jeremy York  
**License No.:** A140059  
 12/31/2019

## Environmental

### Starting Conditions

**Sky Condition:** Mostly Cloudy      **Wind Speed:** 10.0      **Wind Direction:** Southwest  
**Soil Condition:** Unknown      **Temperature:** 67.0      **Humidity:** 82.0

### Ending Conditions

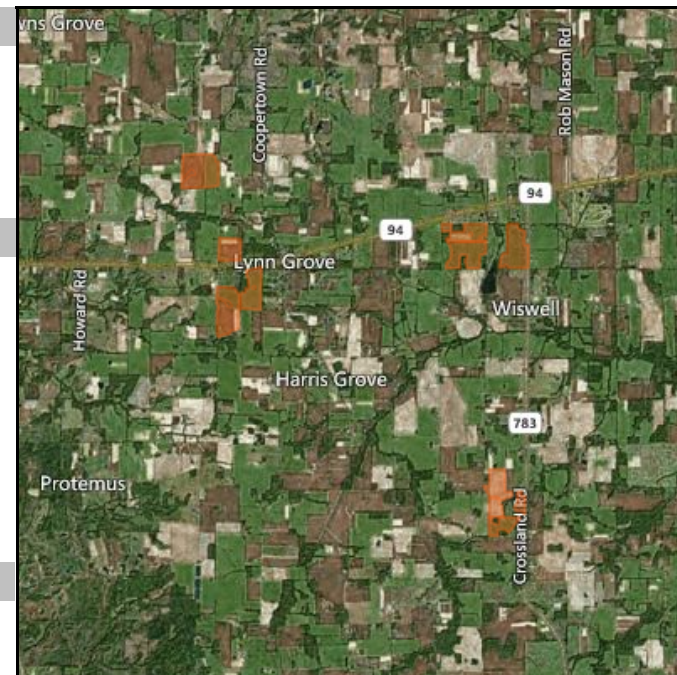
**Sky Condition:** Mostly Sunny      **Wind Speed:** 8.0      **Wind Direction:** South-Southwest  
**Soil Condition:** Unknown      **Temperature:** 72.0      **Humidity:** 75.0

## Tank Information

**Size:**      **Carrier/Area:**      **Total Carrier:**      **Tank Count:** 0.00

## Notes

\*\*\*\*\*  
 Source :: WorkOrder #Corn - Acuron



**Products** **\$26,052.31**

# York Family Farms

Application

2019

Joe Ben Bogle

4/3/2019

## Corn - Acuron

5/1/2019

Name / Active	Reg #	Pest	REI	PHI	App Method	App Area	Cost	Rate / ac.	Total
Acuron Atrazine,Bicyclopyrone,s-Metolachlor,Mesotrione	100-1466	Palmer amaranth	24	60	Ground - Broadcast	576.84 ac.	\$22,591.28 \$39.16 per ac.		2.50 qt 360.52 gal
<b>Spraying</b>			*	*	Ground - Broadcast	576.84 ac.	\$3,461.03 \$6.00 per ac.		1.00 ac. 576.84 ac.

Fields						576.84 ac.
Farm	Field	Crop Zone	Crop	Center Lat/Long	App Area	
Darnell Farms	D01	Corn	Corn	36.58474, -88.44455	56.00	
Darnell Farms	D02	Corn	Corn	36.58146, -88.44965	80.00	
Darnell Farms	D06	Corn	Corn	36.60435, -88.45524	94.86	
Darnell Farms	D07	Corn	Corn	36.59149, -88.44922	39.62	
Merriam Farms	M13	Corn	Corn	36.55285, -88.39448	43.67	
Merriam Farms	M14	Corn	Corn	36.54733, -88.39409	48.95	
Merriam Farms	M15	Corn	Corn	36.54987, -88.38979	13.62	
York Farms	Y01	Corn	Corn	36.59155, -88.3908	75.12	
York Farms	Y02	Corn	Corn	36.59422, -88.40071	55.00	
York Farms	Y03	Corn	Corn	36.59077, -88.40085	70.00	

**Signature** \_\_\_\_\_

**Date** \_\_\_\_\_