

York Family Farms

10/15/2019

Corn - Harvest

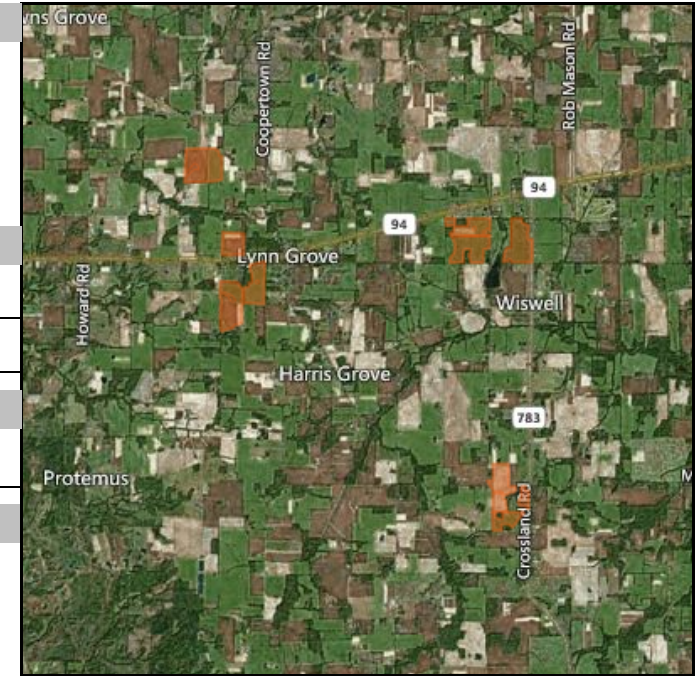
Work Order

2019

Authorized By Joe Ben Bogle

10/1/2019

Application Date And Time		Applicators	
Start Time		Name Company	License Number
Finish Time		Jeremy York	A140059 12/31/2019
Timing Event Harvest			
Environmental			
Sky Condition		Wind Speed	Wind Direction
Soil Condition		Temperature	Humidity
Tank Information			
Size	1,000.00 gal	Carrier Area	15.00 gal
Total Carrier	8,652.58 gal	Tank Count	8.65
Notes			



Products									
Name	Active	Reg #	Pest	REI	PHI	App Method	App Area	Rate / ac.	Total
Harvest				*	*		576.84 ac.	1.00 ac.	576.84 ac.

Fields	576.84 ac.
--------	------------

York Family Farms

10/15/2019

Corn - Harvest

Work Order

2019

Authorized By Joe Ben Bogle

10/1/2019

Farm	Fields	Crop Zones	Crop	CENTER LAT/LONG	WO. Area	Actual Area
Darnell Farms	D01	Corn	Corn	36.58474, -88.44455	56.00	
Darnell Farms	D02	Corn	Corn	36.58146, -88.44965	80.00	
Darnell Farms	D06	Corn	Corn	36.60435, -88.45524	94.86	
Darnell Farms	D07	Corn	Corn	36.59149, -88.44922	39.62	
Merriam Farms	M13	Corn	Corn	36.55285, -88.39448	43.67	
Merriam Farms	M14	Corn	Corn	36.54733, -88.39409	48.95	
Merriam Farms	M15	Corn	Corn	36.54987, -88.38979	13.62	
York Farms	Y01	Corn	Corn	36.59155, -88.3908	75.12	
York Farms	Y02	Corn	Corn	36.59422, -88.40071	55.00	
York Farms	Y03	Corn	Corn	36.59077, -88.40085	70.00	

Signature _____

Date _____

York Family Farms

6/22/2019

Corn - Trivapro

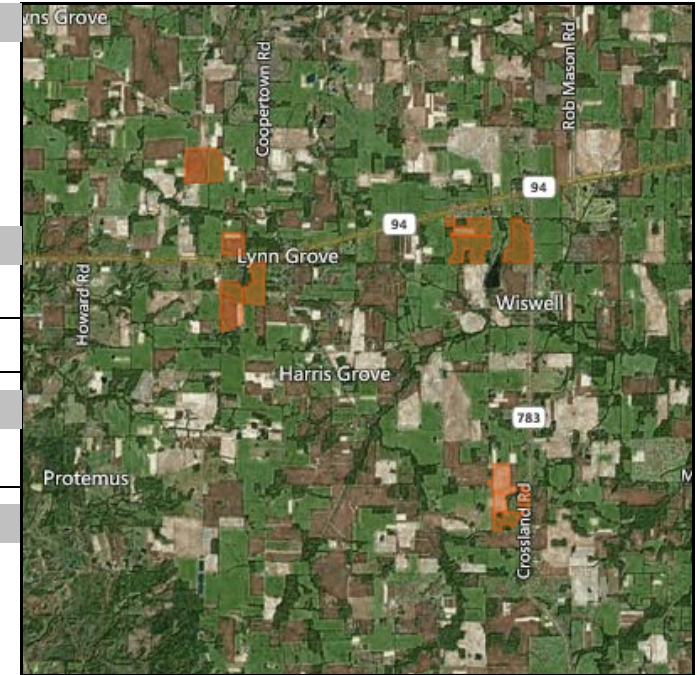
Work Order

2019

Authorized By Peyton Merriam

5/15/2019

Application Date And Time		Applicators	
Start Time		Name Company	License Number
Finish Time		Allen Besand	BES007 12/31/2019
Timing Event Growing			
Environmental			
Sky Condition		Wind Speed	Wind Direction
Soil Condition		Temperature	Humidity
Tank Information			
Size	1,000.00 gal	Carrier Area	15.00 gal
Total Carrier	8,652.58 gal	Tank Count	8.65
Notes			



Products									
Name	Active	Reg #	Pest	REI	PHI	App Method	App Area	Rate / ac.	Total
Warrior II with Zeon Technology	Lambda-cyhalothrin	100-1295		24	21		576.84 ac.	1.60 fl oz	7.21 gal
Spraying				*	*		576.84 ac.	1.00 ac.	576.84 ac.
Trivapro	Propiconazole, Azoxystrobin, Benzo vindiflupyr	100-1613		12	30		576.84 ac.	13.70 fl oz	61.74 gal
Fields									576.84 ac.

York Family Farms

6/22/2019

Corn - Trivapro

Work Order

2019

Authorized By Peyton Merriam

5/15/2019

Farm	Fields	Crop Zones	Crop	CENTER LAT/LONG	WO. Area	Actual Area
Darnell Farms	D01	Corn	Corn	36.58474, -88.44455	56.00	
Darnell Farms	D02	Corn	Corn	36.58146, -88.44965	80.00	
Darnell Farms	D06	Corn	Corn	36.60435, -88.45524	94.86	
Darnell Farms	D07	Corn	Corn	36.59149, -88.44922	39.62	
Merriam Farms	M13	Corn	Corn	36.55285, -88.39448	43.67	
Merriam Farms	M14	Corn	Corn	36.54733, -88.39409	48.95	
Merriam Farms	M15	Corn	Corn	36.54987, -88.38979	13.62	
York Farms	Y01	Corn	Corn	36.59155, -88.3908	75.12	
York Farms	Y02	Corn	Corn	36.59422, -88.40071	55.00	
York Farms	Y03	Corn	Corn	36.59077, -88.40085	70.00	

Signature _____

Date _____

Worker Protection

Warrior II with Zeon Technology

Signal Word	WARNING	RUP	True
PPE	Some materials that are chemical-resistant to this product are listed below. If you want more options, follow the instructions for Category G on an EPA chemical resistance category selection chart. Applicators and other handlers must wear: - Long-sleeved shirt and long pants - Chemical-resistant gloves, Category G, such as barrier laminate or Viton(R) >= 14 mils - Shoes plus socks - Protective eyewear Discard clothing and other absorbent materials that have been drenched or heavily contaminated with this product's concentrate. DO NOT reuse them. Follow manufacturer's instructions for cleaning/maintaining PPE. If no such instructions for washables, use detergent and hot water. Keep and wash PPE separately from other laundry. When handlers use closed systems, enclosed cabs, or aircraft in a manner that meets the requirements listed in the Worker Protection Standard (WPS) for agricultural pesticides [40 CFR 170.240 (d)(4-6)], the handler PPE requirements may be reduced or modified as specified in the WPS.		
ReEntry	PPE required for early entry to treated areas that is permitted under the Worker Protection Standard and that involves contact with anything that has been treated, such as plants, soil, or water is: - Coveralls - Chemical-resistant gloves, Category G, such as barrier laminate or Viton(R) >= 14 mils - Shoes plus socks		

Trivapro

Signal Word	WARNING	RUP	False
PPE	Applicators and other handlers must wear: - Long-sleeved shirt and long pants - Chemical-resistant gloves (barrier laminate, butyl rubber, nitrile rubber, neoprene rubber, natural rubber, polyethylene, polyvinyl chloride, or Viton(R).) - Shoes plus socks - Protective eyewear (goggles, face shield, or shielded safety glasses)		
ReEntry	PPE required for early entry to treated areas that is permitted under the Worker Protection Standard and that involves contact with anything that has been treated, such as plants, soil or water: - Coveralls - Chemical-resistant gloves (barrier laminate, butyl rubber, nitrile rubber, neoprene rubber, natural rubber, polyethylene, polyvinyl chloride, or Viton.) - Shoes plus socks - Protective eyewear (goggles, face shield, or shielded safety glasses)		

York Family Farms

5/15/2019

Corn - Anhydrous

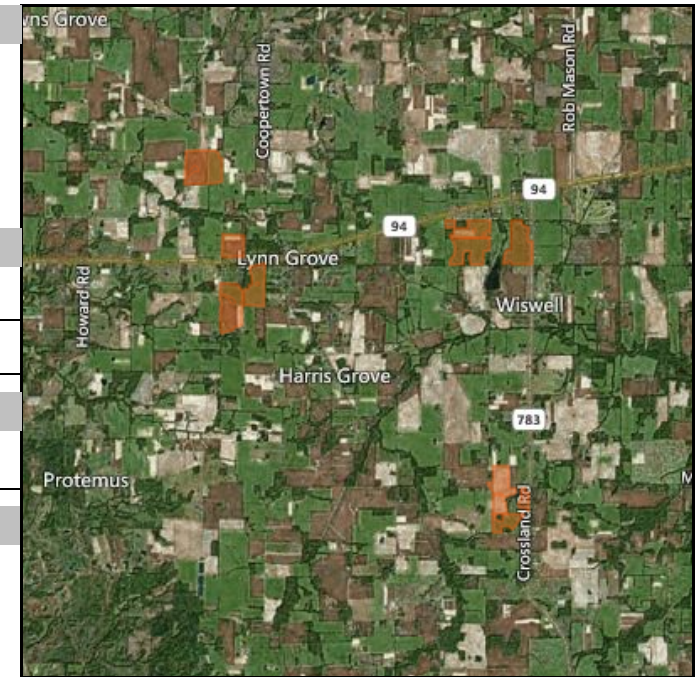
Work Order

2019

Authorized By Jeremy York

5/15/2019

Application Date And Time		Applicators	
Start Time		Name Company	License Number
Finish Time		Peyton Merriam	ABC123 12/31/2019
Timing Event Growing			
Environmental			
Sky Condition		Wind Speed	Wind Direction
Soil Condition		Temperature	Humidity
Tank Information			
Size	1,000.00 gal	Carrier Area	15.00 gal
Total Carrier	8,652.58 gal	Tank Count	8.65
Notes			



Products									
Name	Active	Reg #	Pest	REI	PHI	App Method	App Area	Rate / ac.	Total
82-0-0				*	*		576.84 ac.	200.00 lb	57.68 ton
Anhydrous Application				*	*		576.84 ac.	1.00 ac.	576.84 ac.

Fields	576.84 ac.
--------	------------

York Family Farms

5/15/2019

Corn - Anhydrous

Work Order

2019

Authorized By Jeremy York

5/15/2019

Farm	Fields	Crop Zones	Crop	CENTER LAT/LONG	WO. Area	Actual Area
Darnell Farms	D01	Corn	Corn	36.58474, -88.44455	56.00	
Darnell Farms	D02	Corn	Corn	36.58146, -88.44965	80.00	
Darnell Farms	D06	Corn	Corn	36.60435, -88.45524	94.86	
Darnell Farms	D07	Corn	Corn	36.59149, -88.44922	39.62	
Merriam Farms	M13	Corn	Corn	36.55285, -88.39448	43.67	
Merriam Farms	M14	Corn	Corn	36.54733, -88.39409	48.95	
Merriam Farms	M15	Corn	Corn	36.54987, -88.38979	13.62	
York Farms	Y01	Corn	Corn	36.59155, -88.3908	75.12	
York Farms	Y02	Corn	Corn	36.59422, -88.40071	55.00	
York Farms	Y03	Corn	Corn	36.59077, -88.40085	70.00	

Signature _____

Date _____

York Family Farms

5/1/2019

Corn - Acuron

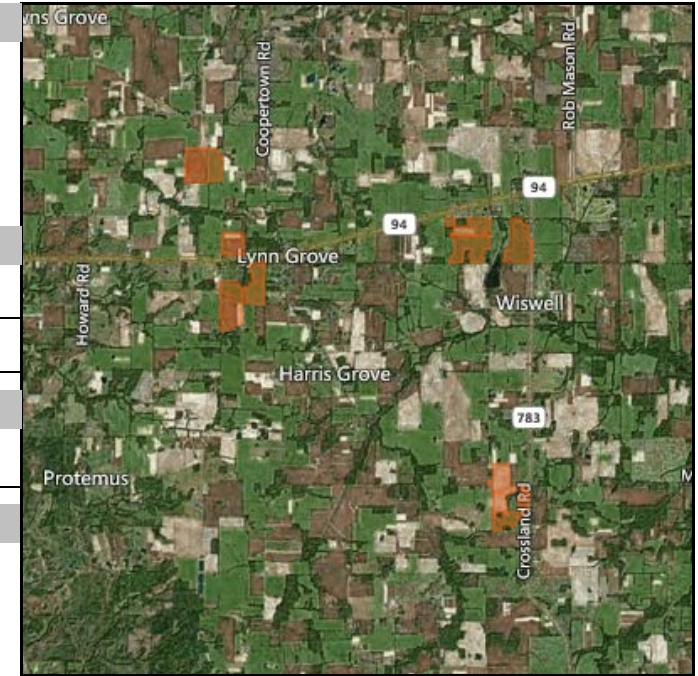
Work Order

2019

Authorized By Joe Ben Bogle

4/3/2019

Application Date And Time		Applicators	
Start Time		Name Company	License Number
Finish Time		Jeremy York	A140059 12/31/2019
Timing Event Pre-Plant			
Environmental			
Sky Condition		Wind Speed	Wind Direction
Soil Condition		Temperature	Humidity
Tank Information			
Size	1,000.00 gal	Carrier Area	15.00 gal
Total Carrier	8,652.58 gal	Tank Count	8.65
Notes			



Products									
Name	Active	Reg #	Pest	REI	PHI	App Method	App Area	Rate / ac.	Total
Acuron	Atrazine,Bicyclopyrone,s-Metolachlor,Mesotrione	100-1466	Palmer amaranth	24	60	Ground - Broadcast	576.84 ac.	2.50 qt	360.52 gal
Spraying				*	*		576.84 ac.	1.00 ac.	576.84 ac.

Fields	576.84 ac.
--------	------------

York Family Farms

5/1/2019

Corn - Acuron

Work Order

2019

Authorized By Joe Ben Bogle

4/3/2019

Farm	Fields	Crop Zones	Crop	CENTER LAT/LONG	WO. Area	Actual Area
Darnell Farms	D01	Corn	Corn	36.58474, -88.44455	56.00	
Darnell Farms	D02	Corn	Corn	36.58146, -88.44965	80.00	
Darnell Farms	D06	Corn	Corn	36.60435, -88.45524	94.86	
Darnell Farms	D07	Corn	Corn	36.59149, -88.44922	39.62	
Merriam Farms	M13	Corn	Corn	36.55285, -88.39448	43.67	
Merriam Farms	M14	Corn	Corn	36.54733, -88.39409	48.95	
Merriam Farms	M15	Corn	Corn	36.54987, -88.38979	13.62	
York Farms	Y02	Corn	Corn	36.59422, -88.40071	55.00	
York Farms	Y03	Corn	Corn	36.59077, -88.40085	70.00	
York Farms	Y01	Corn	Corn	36.59155, -88.3908	75.12	

Signature _____

Date _____

Worker Protection

Acuron

Signal Word	CAUTION	RUP	True
PPE	<p>Some materials that are chemical-resistant to this product are listed below. Mixers, Loaders, Applicators and other handlers must wear: - Coveralls over short-sleeved shirt and short pants - Chemical-resistant gloves made of barrier laminate, butyl rubber >= 14 mils, nitrile rubber >= 14 mils, neoprene rubber >= 14 mils, natural rubber >= 14 mils, polyethylene, polyvinyl chloride (PVC) >= 14 mils, or Viton(R) >= 14 mils - Chemical-resistant footwear plus socks - Chemical-resistant apron when mixing/loading, cleaning up spills, or cleaning equipment, or otherwise exposed to the concentrate - Chemical-resistant headgear for overhead exposure See engineering controls for additional requirements. Follow manufacturer's instructions for cleaning/maintaining PPE. If no such instructions for washables exist, use detergent and hot water. Keep and wash PPE separately from other laundry. Discard clothing and other absorbent materials that have been drenched or heavily contaminated with this product's concentrate. Do not reuse them.</p>		
ReEntry	<p>For early entry to treated areas that is permitted under the Worker Protection Standard and that involves contact with anything that has been treated, such as plants, soil and water, wear: - Coveralls over short-sleeved shirt and short pants - Chemical-resistant gloves Category A (e.g. barrier laminate, butyl rubber, nitrile rubber, neoprene rubber, natural rubber, polyethylene, polyvinyl chloride (PVC) or Viton) - Chemical resistant footwear plus socks - Chemical-resistant headgear for overhead exposure.</p>		

York Family Farms

4/15/2019

Corn - Planting

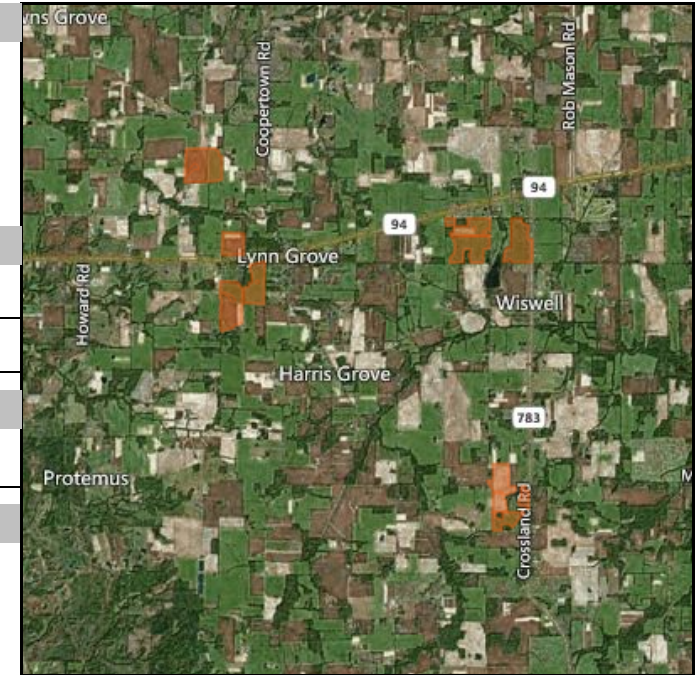
Work Order

2019

Authorized By Joe Ben Bogle

4/15/2019

Application Date And Time		Applicators	
Start Time		Name Company	License Number
Finish Time		Jeremy York	A140059 12/31/2019
Timing Event Planting			
Environmental			
Sky Condition	Wind Speed	Wind Direction	
Soil Condition	Temperature	Humidity	
Tank Information			
Size	Carrier Area	Total Carrier	Tank Count
Notes			



Products									
Name	Active	Reg #	Pest	REI	PHI	App Method	App Area	Rate / ac.	Total
N68B-3122				*	*		576.84 ac.	32,000.00 kernel	230.74 bag
Planting				*	*		576.84 ac.	1.00 ac.	576.84 ac.

Fields	576.84 ac.
--------	------------

York Family Farms

4/15/2019

Corn - Planting

Work Order

2019

Authorized By Joe Ben Bogle

4/15/2019

Farm	Fields	Crop Zones	Crop	CENTER LAT/LONG	WO. Area	Actual Area
Darnell Farms	D01	Corn	Corn	36.58474, -88.44455	56.00	
Darnell Farms	D02	Corn	Corn	36.58146, -88.44965	80.00	
Darnell Farms	D06	Corn	Corn	36.60435, -88.45524	94.86	
Darnell Farms	D07	Corn	Corn	36.59149, -88.44922	39.62	
Merriam Farms	M13	Corn	Corn	36.55285, -88.39448	43.67	
Merriam Farms	M14	Corn	Corn	36.54733, -88.39409	48.95	
Merriam Farms	M15	Corn	Corn	36.54987, -88.38979	13.62	
York Farms	Y01	Corn	Corn	36.59155, -88.3908	75.12	
York Farms	Y02	Corn	Corn	36.59422, -88.40071	55.00	
York Farms	Y03	Corn	Corn	36.59077, -88.40085	70.00	

Signature _____

Date _____

York Family Farms

3/25/2019

Corn - Gramoxone

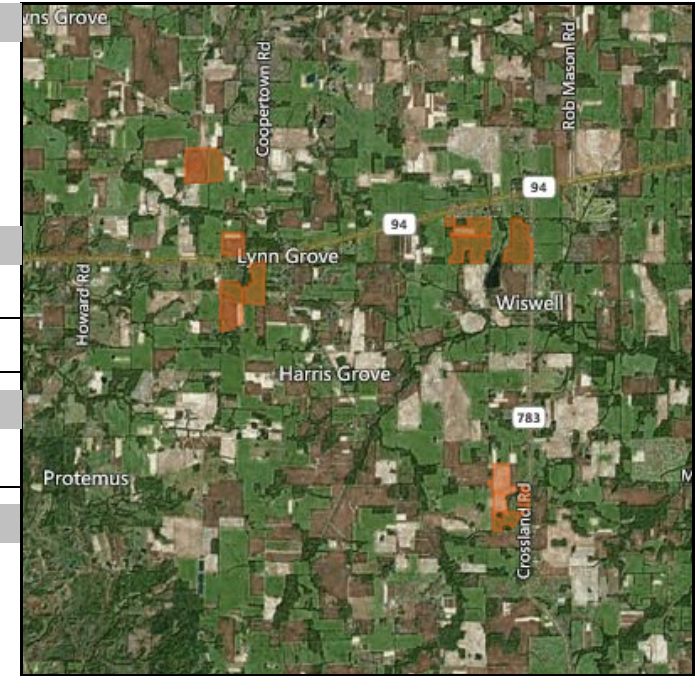
Work Order

2019

Authorized By Joe Ben Bogle

3/25/2019

Application Date And Time		Applicators	
Start Time		Name Company	License Number
Finish Time		Jeremy York	A140059 12/31/2019
Timing Event Pre-Plant			
Environmental			
Sky Condition		Wind Speed	Wind Direction
Soil Condition		Temperature	Humidity
Tank Information			
Size	Carrier Area	Total Carrier	Tank Count
Notes			



Products									
Name	Active	Reg #	Pest	REI	PHI	App Method	App Area	Rate / ac.	Total
Gramoxone SL 2.0	Paraquat dichloride	100-1431		12	7		576.84 ac.	1.50 pt	108.16 gal
Spraying				*	*		576.84 ac.	1.00 ac.	576.84 ac.

Fields	576.84 ac.
--------	------------

York Family Farms

3/25/2019

Corn - Gramoxone

Work Order

2019

Authorized By Joe Ben Bogle

3/25/2019

Farm	Fields	Crop Zones	Crop	CENTER LAT/LONG	WO. Area	Actual Area
Darnell Farms	D01	Corn	Corn	36.58474, -88.44455	56.00	
Darnell Farms	D02	Corn	Corn	36.58146, -88.44965	80.00	
Darnell Farms	D06	Corn	Corn	36.60435, -88.45524	94.86	
Darnell Farms	D07	Corn	Corn	36.59149, -88.44922	39.62	
Merriam Farms	M13	Corn	Corn	36.55285, -88.39448	43.67	
Merriam Farms	M14	Corn	Corn	36.54733, -88.39409	48.95	
Merriam Farms	M15	Corn	Corn	36.54987, -88.38979	13.62	
York Farms	Y01	Corn	Corn	36.59155, -88.3908	75.12	
York Farms	Y02	Corn	Corn	36.59422, -88.40071	55.00	
York Farms	Y03	Corn	Corn	36.59077, -88.40085	70.00	

Signature _____

Date _____

Worker Protection

Gramoxone SL 2.0

Signal Word	DANGER POISON	RUP	True
PPE	Personal Protective Equipment (PPE) Applicators and other handlers (other than Mixers and Loaders) must wear: - Long-sleeve shirt and long pants - Shoes plus socks - Protective eyewear - Chemical-resistant gloves - Category A (e.g. barrier laminate, butyl rubber, nitrile rubber, neoprene rubber, natural rubber, polyethylene, polyvinyl chloride (PVC) or Viton(R)) - A dust mist NIOSH-approved respirator with any N, R, P, or HE filter Mixers and Loaders must wear: - Long-sleeve shirt and long pants - Shoes plus socks - A dust mist NIOSH-approved respirator with any N, R, P, or HE filter - Chemical-resistant gloves - Category A (e.g. barrier laminate, butyl rubber, nitrile rubber, neoprene rubber, natural rubber, polyethylene, polyvinyl chloride (PVC) or Viton) - Chemical-resistant apron - Face shield Discard clothing and other absorbent materials that have been drenched or heavily contaminated with this products concentrate. Do not reuse them. Follow manufacturers instructions for cleaning/maintaining PPE. If no such instructions for washables exist, use detergent and hot water. Keep and wash PPE separately from other laundry.		
ReEntry	PPE required for early entry to treated areas that is permitted under the Worker Protection Standard and that involves contact with anything that has been treated, such as plants, soil, or water, is: - Coveralls - Shoes plus socks - Protective eyewear - Chemical-resistant gloves - Category A (e.g. barrier laminate, butyl rubber, nitrile rubber, neoprene rubber, natural rubber, polyethylene, polyvinyl chloride (PVC) or Viton).		

York Family Farms

3/15/2019

Corn - Starter Fertilizer

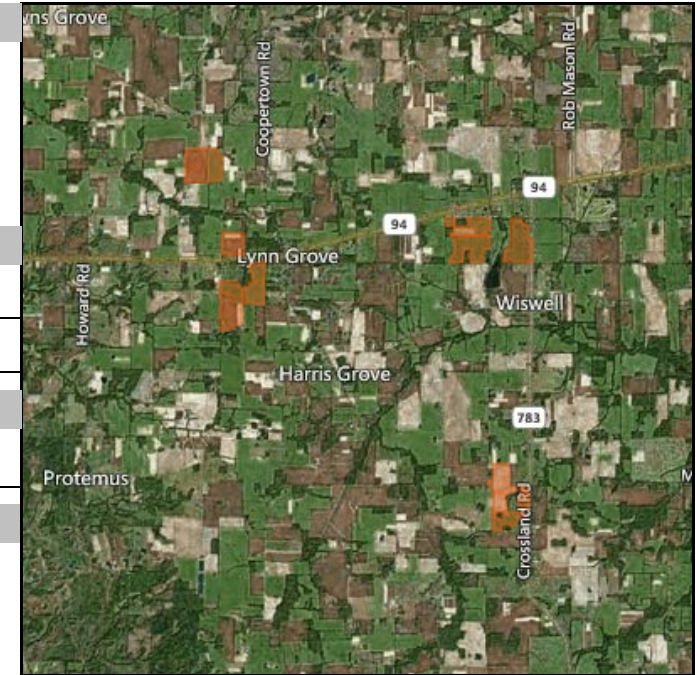
Work Order

2019

Authorized By Joe Ben Bogle

3/15/2019

Application Date And Time		Applicators	
Start Time		Name Company	License Number
Finish Time		Jeremy York	A140059 12/31/2019
Timing Event Pre-Plant			
Environmental			
Sky Condition		Wind Speed	Wind Direction
Soil Condition		Temperature	Humidity
Tank Information			
Size	Carrier Area	Total Carrier	Tank Count
Notes			



Products									
Name	Active	Reg #	Pest	REI	PHI	App Method	App Area	Rate / ac.	Total
18-46-0				*	*		576.84 ac.	200.00 lb	57.68 ton
0-0-60				*	*		576.84 ac.	100.00 lb	28.84 ton
Spreading				*	*		576.84 ac.	1.00 ac.	576.84 ac.
Fields									576.84 ac.

York Family Farms

3/15/2019

Corn - Starter Fertilizer

Work Order

2019

Authorized By Joe Ben Bogle

3/15/2019

Farm	Fields	Crop Zones	Crop	CENTER LAT/LONG	WO. Area	Actual Area
Darnell Farms	D01	Corn	Corn	36.58474, -88.44455	56.00	
Darnell Farms	D02	Corn	Corn	36.58146, -88.44965	80.00	
Darnell Farms	D06	Corn	Corn	36.60435, -88.45524	94.86	
Darnell Farms	D07	Corn	Corn	36.59149, -88.44922	39.62	
Merriam Farms	M13	Corn	Corn	36.55285, -88.39448	43.67	
Merriam Farms	M14	Corn	Corn	36.54733, -88.39409	48.95	
Merriam Farms	M15	Corn	Corn	36.54987, -88.38979	13.62	
York Farms	Y01	Corn	Corn	36.59155, -88.3908	75.12	
York Farms	Y02	Corn	Corn	36.59422, -88.40071	55.00	
York Farms	Y03	Corn	Corn	36.59077, -88.40085	70.00	

Signature _____

Date _____

York Family Farms

3/14/2019

Wheat - Urea

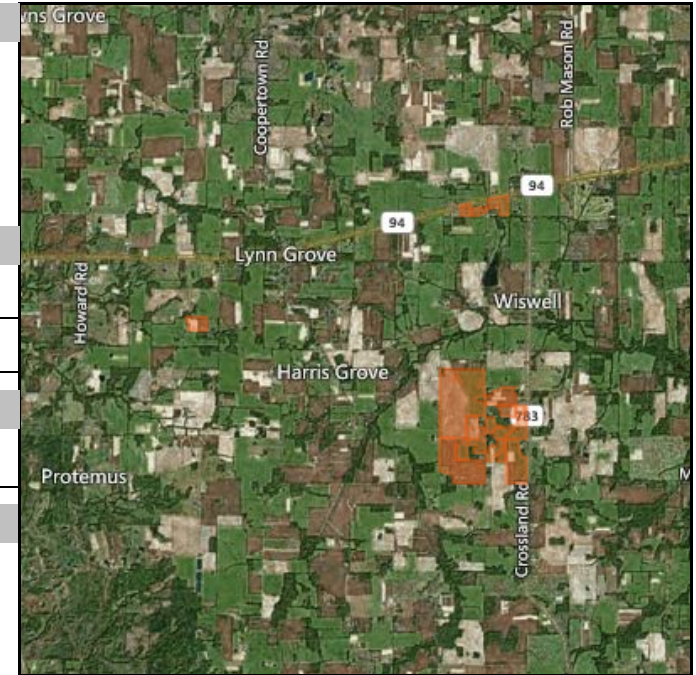
Work Order

2019

Authorized By Joe Ben Bogle

3/14/2019

Application Date And Time		Applicators	
Start Time		Name Company	License Number
Finish Time		Allen Besand	BES007 4/18/2019
Timing Event Growing			
Environmental			
Sky Condition		Wind Speed	Wind Direction
Soil Condition		Temperature	Humidity
Tank Information			
Size	Carrier Area	Total Carrier	Tank Count
Notes			



Products									
Name	Active	Reg #	Pest	REI	PHI	App Method	App Area	Rate / ac.	Total
46-0-0				*	*		641.38 ac.	125.00 lb	40.09 ton
AGROTAIN ADVANCED	N-(n-butyl) thiophosphoric triamide			*	*		641.38 ac.	4.00 fl oz	20.04 gal

Fields	641.38 ac.
--------	------------

York Family Farms

3/14/2019

Wheat - Urea

Work Order

2019

Authorized By Joe Ben Bogle

3/14/2019

Farm	Fields	Crop Zones	Crop	CENTER LAT/LONG	WO. Area	Actual Area
Darnell Farms	D05	Wheat : Soft Red Winter	Wheat : Soft Red Winter	36.57804, -88.45596	21.84	
Merriam Farms	M01	Wheat : Soft Red Winter	Wheat : Soft Red Winter	36.56545, -88.4024	214.89	
Merriam Farms	M02	Wheat : Soft Red Winter	Wheat : Soft Red Winter	36.56091, -88.39954	25.83	
Merriam Farms	M03	Wheat : Soft Red Winter	Wheat : Soft Red Winter	36.55494, -88.4025	103.57	
Merriam Farms	M04	Wheat : Soft Red Winter	Wheat : Soft Red Winter	36.55728, -88.40191	17.49	
Merriam Farms	M05	Wheat : Soft Red Winter	Wheat : Soft Red Winter	36.55808, -88.39876	15.45	
Merriam Farms	M06	Wheat : Soft Red Winter	Wheat : Soft Red Winter	36.56596, -88.39381	36.92	
Merriam Farms	M07	Wheat : Soft Red Winter	Wheat : Soft Red Winter	36.56374, -88.39259	15.07	
Merriam Farms	M08	Wheat : Soft Red Winter	Wheat : Soft Red Winter	36.56379, -88.38991	8.30	
Merriam Farms	M09	Wheat : Soft Red Winter	Wheat : Soft Red Winter	36.5608, -88.39473	27.25	
Merriam Farms	M10	Wheat : Soft Red Winter	Wheat : Soft Red Winter	36.56046, -88.39027	22.17	
Merriam Farms	M11	Wheat : Soft Red Winter	Wheat : Soft Red Winter	36.557, -88.39489	26.89	
Merriam Farms	M12	Wheat : Soft Red Winter	Wheat : Soft Red Winter	36.55509, -88.39108	65.29	
York Farms	Y04	Wheat : Soft Red Winter	Wheat : Soft Red Winter	36.59754, -88.39422	22.67	
York Farms	Y05	Wheat : Soft Red Winter	Wheat : Soft Red Winter	36.59643, -88.39854	8.38	
York Farms	Y06	Wheat : Soft Red Winter	Wheat : Soft Red Winter	36.5966, -88.40114	9.37	

Signature _____

Date _____